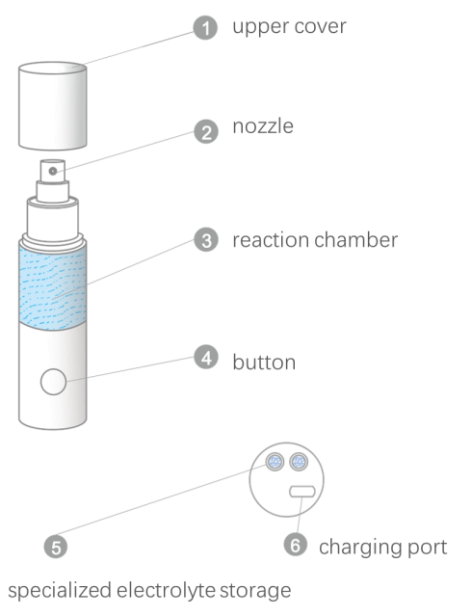


## Multi-Functional Sterilizer (Ultimate Travel Companion)

### Product introduction

This device can directly utilize the chlorine element in tap water and convert it into low-concentration hypochlorous acid (5-10mg/L) through electrolysis; alternatively, it can use special electrolyte to generate medium-concentration hypochlorous acid (approximately 100mg/L) with pH around 5.8.



### Specification Parameters

Model	Multi-Functional Electrolyzed Water Sterilizer ( Ultimate Travel Companion )
Operating Voltage	12V
Input Power Supply	5V/2A Adapter
Rated Power	1.4W
Battery Capacity	400mAh
Electrolysis time	1.5 minutes
Hypochlorous acid concentration	<b>Low:</b> Electrolyzing tap water, approximately 5-10ppm. <b>Medium:</b> Electrolyzing with special electrolyte, approximately 100ppm and pH5.8
Product Dimensions	17×7.5×4.5cm

## **Usage Scenarios**

### **(1) Preventive Disinfection (Low-concentration)**

Apply to the surfaces of contact objects such as handrails of public transportation (e.g., buses, subways, shared bikes), elevators, and express parcels.

### **(2) Emergency Disinfection (Medium-concentration)**

Apply to pathogen-contaminated items, epidemic-related objects, and contaminants from blood or body fluids of patients with infectious diseases.

## **Operating Instructions**

1. Unscrew the spray head, pour in approximately 25ml tap water, then screw the spray head tightly.

2. Press and hold the power button for 1 second to start the device; the blue indicator light will turn on and automatically turn off after 1.5 minutes of operation. If the blue indicator light flashes, it indicates low battery, and the device needs to be charged promptly.

### **Ps:**

(1) Preventive Disinfection: Use only tap water with no additives; simply start the device directly.

(2) Emergency Disinfection: Before starting, pull out one special electrolyte tube from the bottom cover and pour into the spray bottle containing 25ml of tap water, shake well and then start the device.

(3) When charging, the green indicator light at the bottom turns on; the indicator light turns off once charging is complete.

## **Cleaning and Maintenance**

1. After using the device, rinse it with clean water promptly and shake it dry.

2. A cathode scale will form on the electrodes after long-term use, which may affect the service life of the device. It is recommended to clean the electrodes once a week with special electrolyte.

## **Precautions**

1. Prepare the reaction solution on-site and use it immediately. Low-concentration hypochlorous acid is recommended to be used within 2 hour; medium-concentration

hypochlorous acid can be stored for 12 hours at room temperature and away from light.

2. After each use, clean the product promptly and keep it as dry as possible after cleaning.
3. Do not modify, disassemble, or repair the product by yourself, as this may cause damage to the main unit.
4. This product is prohibited from being immersed in water.
5. The generated solution is forbidden to drink, and it is not allowed to be mixed with detergents such as concentrated sulfuric acid and toilet cleaners at the same time.

## **Contact us**

e-mail: [ykl1979@163.com](mailto:ykl1979@163.com)

Tel: 18133670714

WeChat ID: 18133670714

Company Address: room 805, Building 5, Anhui Shangrong Great Health Industrial Park Intersection of Baogong Avenue & Dazhong Road Longgang Comprehensive Economic Development Zone, Yaohai District Hefei City, Anhui Province, China